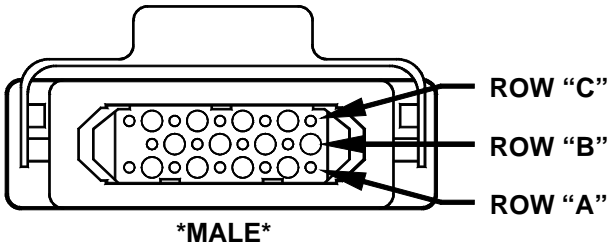




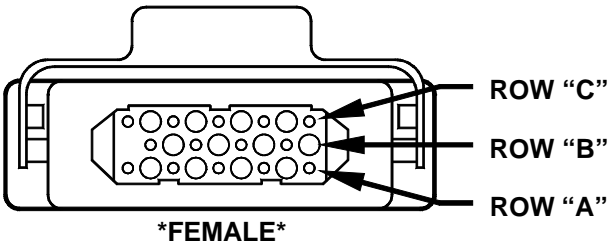
STANDARD MAINFRAME CONNECTOR WIRING DIAGRAM

SIDE OF MAINFRAME

THERMOCOUPLE INPUT CONNECTOR

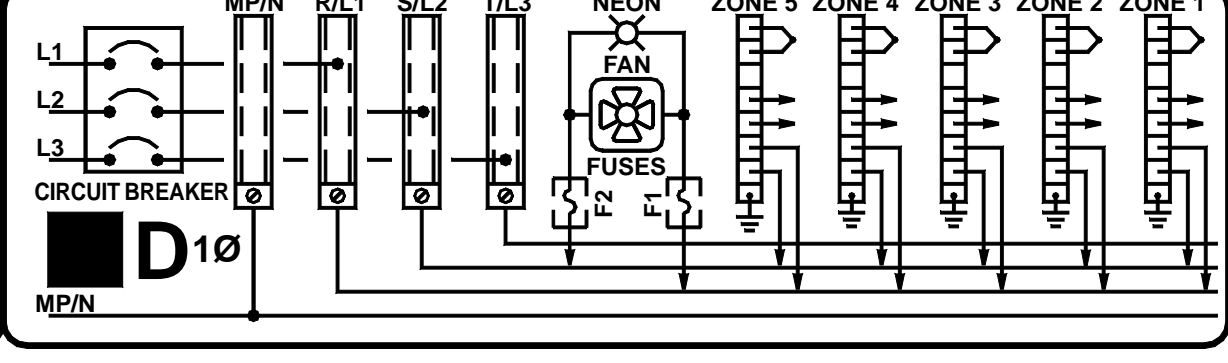
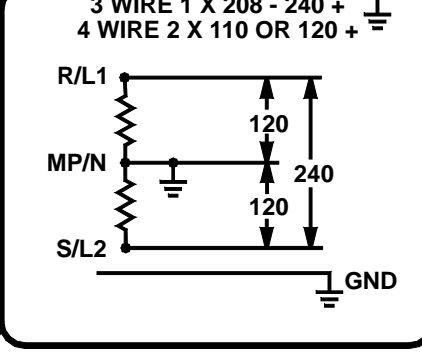
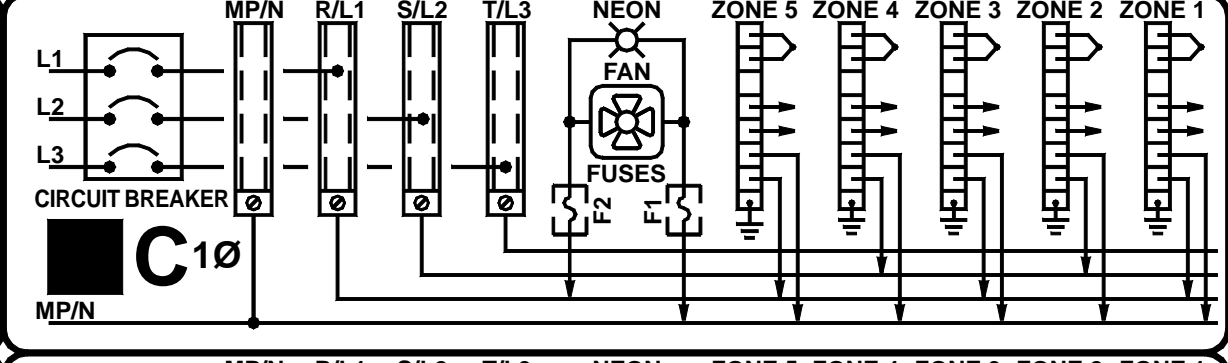
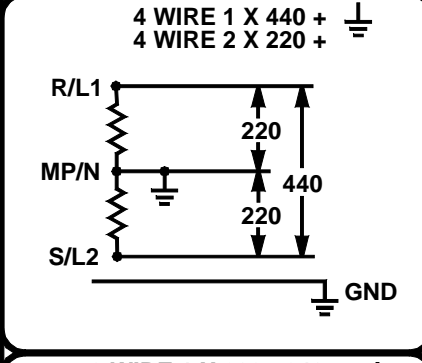
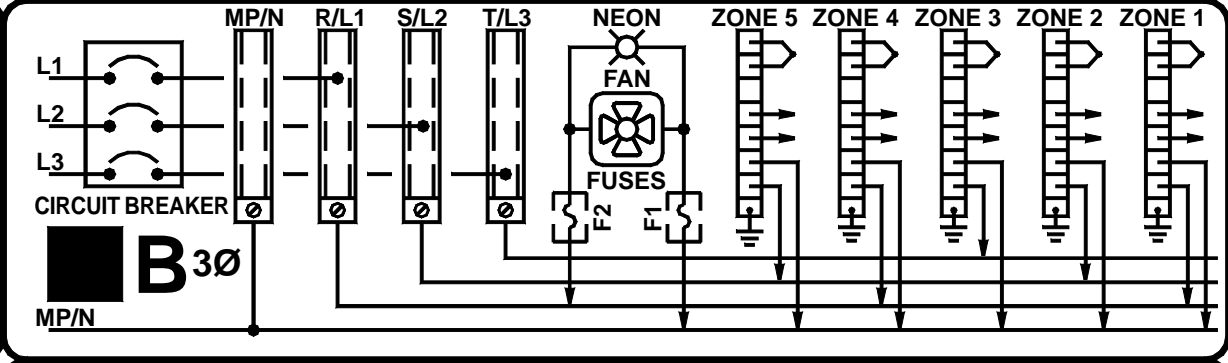
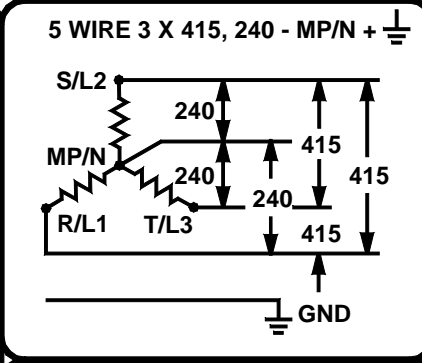
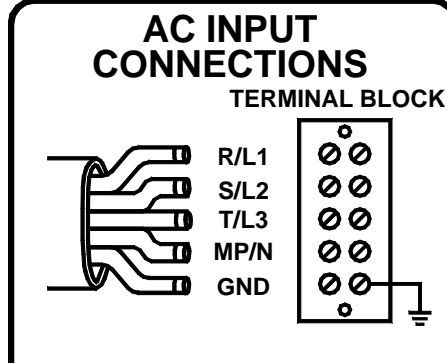
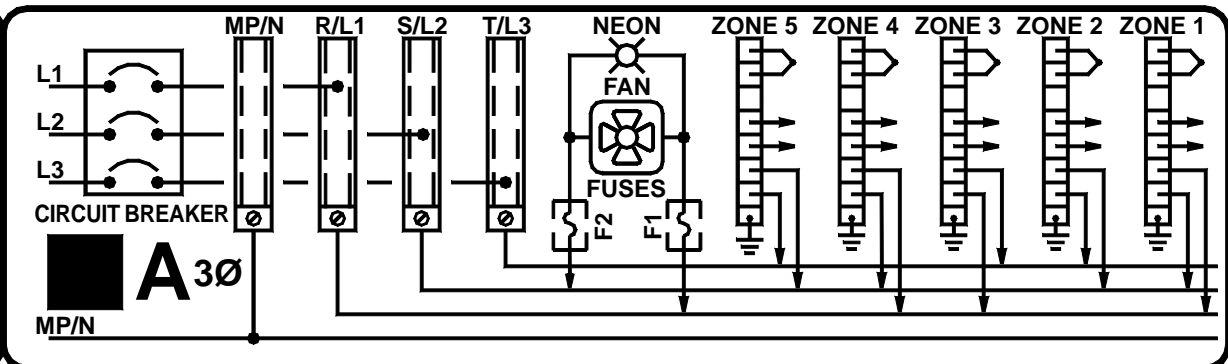
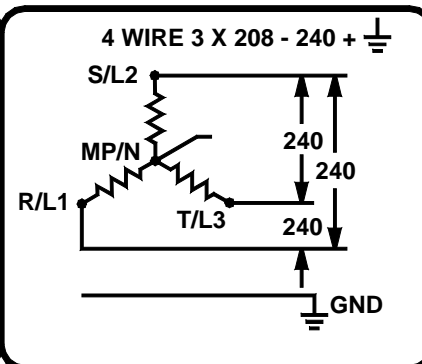
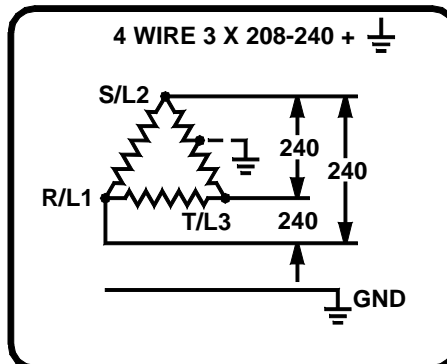


POWER OUTPUT CONNECTOR



THERMOCOUPLE INPUT	
ZONE 1	ROW "A" TERMINALS 1 (WHT) + 2 (RED)
ZONE 2	ROW "A" TERMINALS 3 (WHT) + 4 (RED)
ZONE 3	ROW "A" TERMINALS 5 (WHT) + 6 (RED)
ZONE 4	ROW "A" TERMINALS 7 (WHT) + 8 (RED)
ZONE 5	ROW "B" TERMINALS 2 (WHT) + 3 (RED)
ZONE 6	ROW "B" TERMINALS 4 (WHT) + 5 (RED)
ZONE 7	ROW "B" TERMINALS 6 (WHT) + 7 (RED)
ZONE 8	ROW "C" TERMINALS 1 (WHT) + 2 (RED)
ZONE 9	ROW "C" TERMINALS 3 (WHT) + 4 (RED)
ZONE 10	ROW "C" TERMINALS 5 (WHT) + 6 (RED)
ZONE 11	ROW "C" TERMINALS 7 (WHT) + 8 (RED)
ZONE 12	ROW "A" TERMINAL 9 (WHT) + ROW "C" TERMINAL 9 (RED)
ROW "B" TERMINAL 8 IS NOT USED	

POWER OUTPUT	
ZONE 1	ROW "A" TERMINAL 1 + 2
ZONE 2	ROW "A" TERMINAL 3 + 4
ZONE 3	ROW "A" TERMINAL 5 + 6
ZONE 4	ROW "A" TERMINAL 7 + 8
ZONE 5	ROW "B" TERMINAL 2 + 3
ZONE 6	ROW "B" TERMINAL 4 + 5
ZONE 7	ROW "B" TERMINAL 6 + 7
ZONE 8	ROW "C" TERMINAL 1 + 2
ZONE 9	ROW "C" TERMINAL 3 + 4
ZONE 10	ROW "C" TERMINAL 5 + 6
ZONE 11	ROW "C" TERMINAL 7 + 8
ZONE 12	ROW "A" + "C" TERMINAL 9
ROW "B" TERMINAL 8 IS NOT USED	



DANGER!
HIGH VOLTAGE CIRCUITS
DISCONNECT POWER BEFORE
REMOVING THIS PANEL

DANGER!
COUPEZ LE COURANT AVANT
DE DEMONTER CE PANNEAU

ACHTUNG!
GERÄT STROMLOS MACHEN
DANN ERST RÜCKWAND ABNEHMEN

ATTENZIONE!
TOGLIERE LA CORRENTE PRIMA
DI APRIRE LO SPORTELLLO

PELIGRO!
DESCONECTE FUERSA DE
ABASTECIMIENTO ANTES DE
REMOVER PANEL

MAINFRAME WIRING CONFIGURATIONS

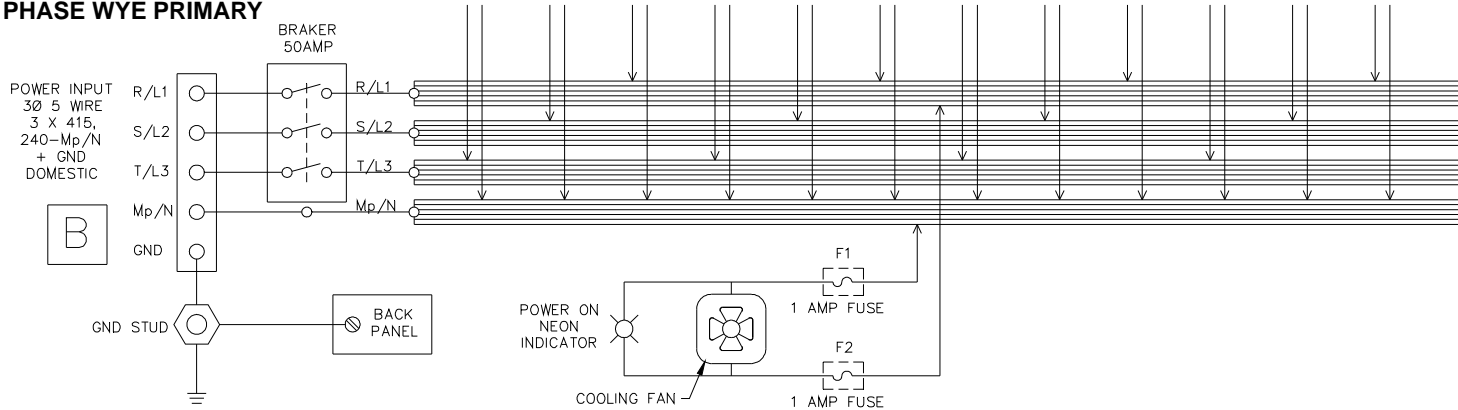
A: 3 PHASE, 4 WIRE - 208-240 VAC (Primarily North America)

B: 3 PHASE, 5 WIRE - 380-415 VAC (Primarily Continental Europe)

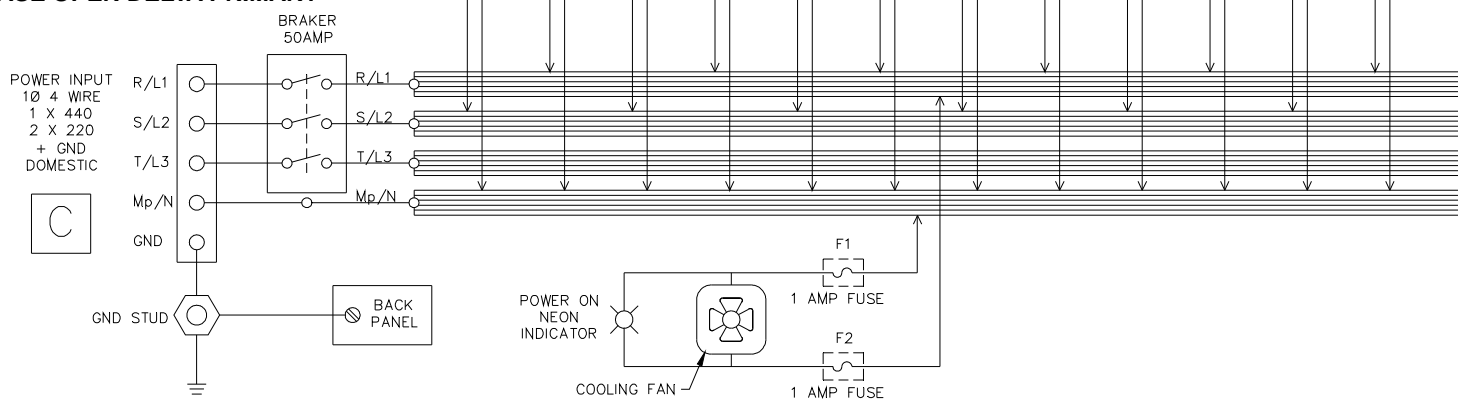
C: 1 PHASE, 4 WIRE - 440 VAC

D: 1 PHASE, 3 WIRE - 208-240 VAC (Standard Single Phase Configuration - North America or Continental Europe)

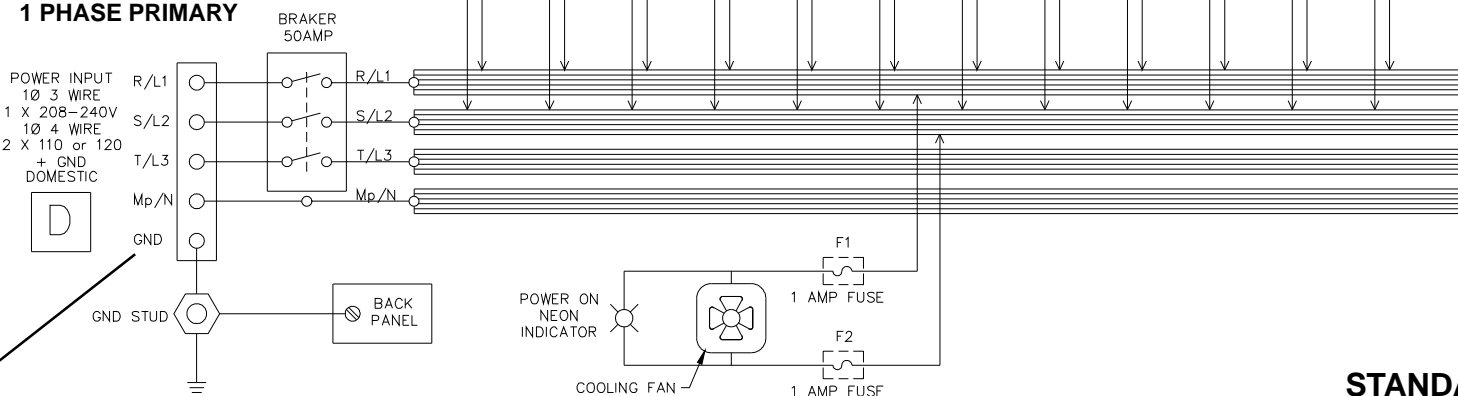
**EUROPEAN STANDARD
3 PHASE WYE PRIMARY**



1 PHASE OPEN DELTA PRIMARY



**NORTH AMERICA ALTERNATE
1 PHASE PRIMARY**



**NOTE: CUSTOMER MUST INSURE OF PROPER
CONNECTION TO EARTH GROUND!
** ALL WIRING CONFIGURATIONS ****

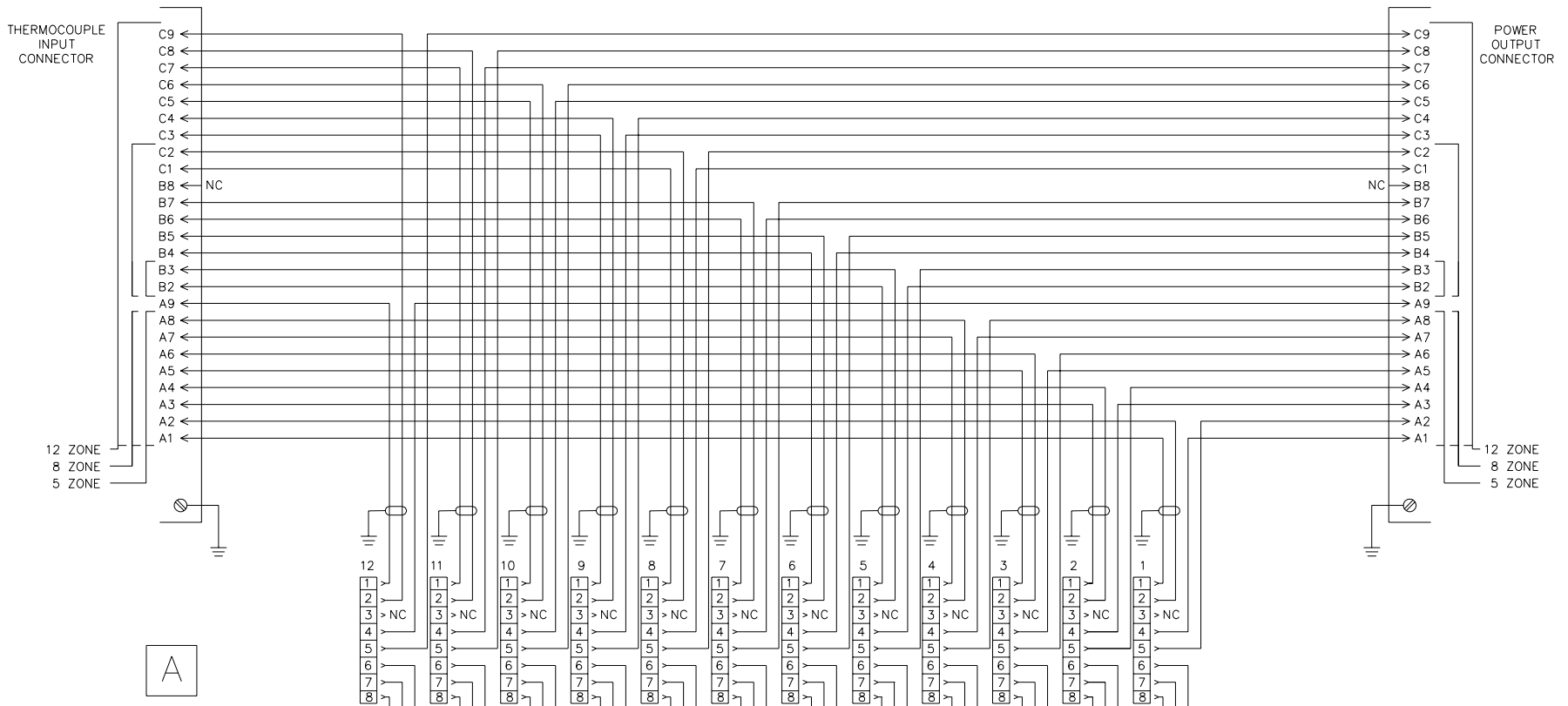
**** ALTERNATE CONFIGURATIONS - STYLES "B", "C" & "D" ****



**STANDARD MAINFRAME
INTERNAL WIRING DIAGRAM**

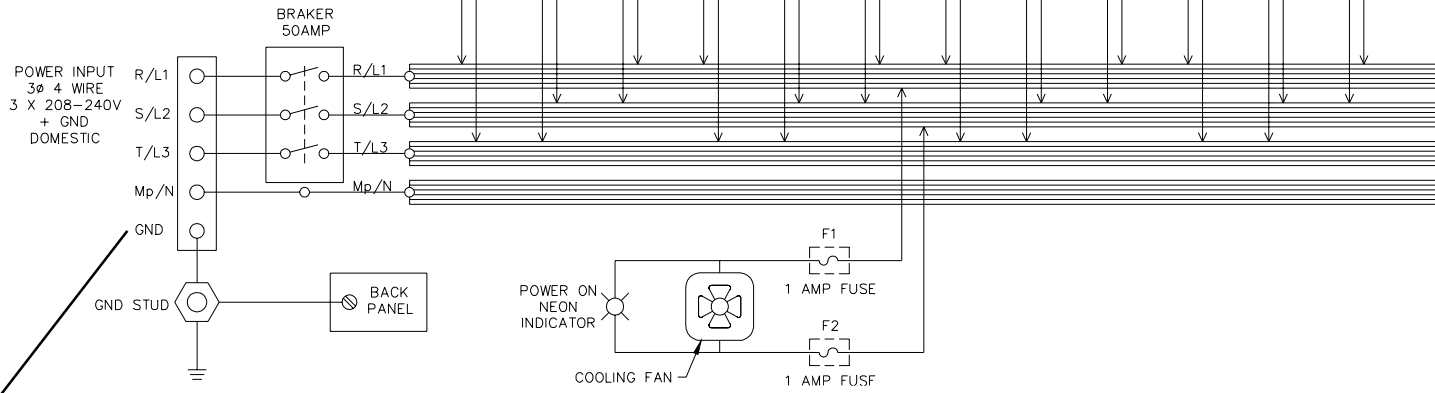
**THERMOCOUPLE INPUT
COMMON TO ALL CONFIGURATIONS**

**MOLD POWER OUTPUT
COMMON TO ALL CONFIGURATIONS**



A

**NORTH AMERICA STANDARD
3 PHASE DELTA PRIMARY**

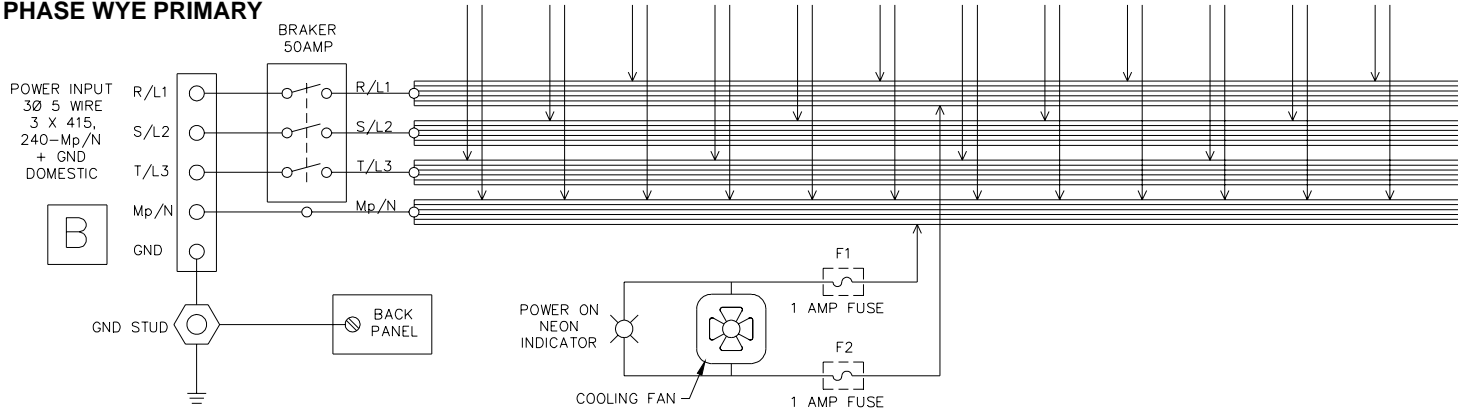


**NOTE: CUSTOMER MUST INSURE OF PROPER
CONNECTION TO EARTH GROUND!**

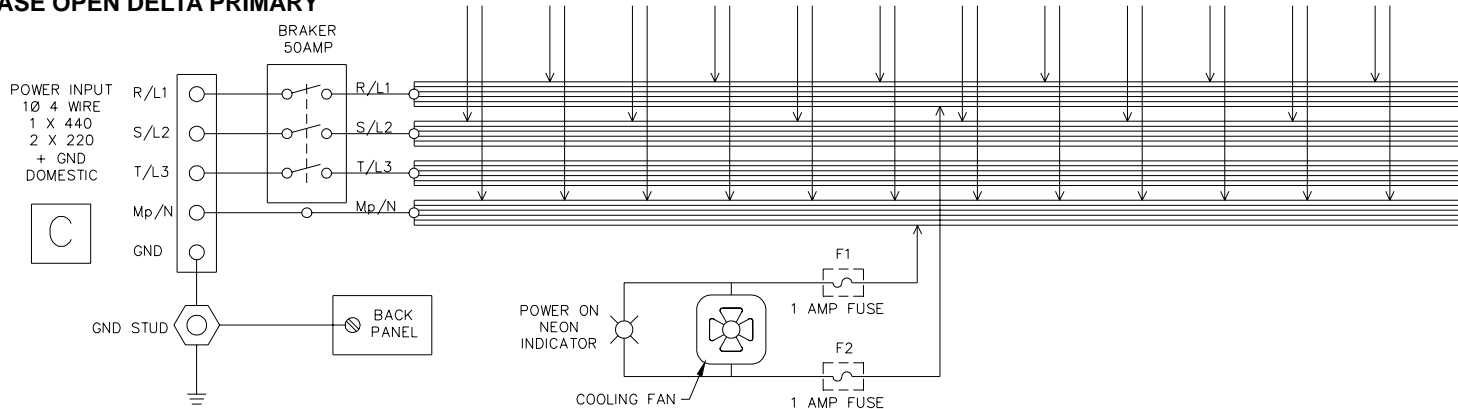


**STANDARD MAINFRAME
INTERNAL WIRING DIAGRAM
STANDARD CONFIGURATION - STYLE "A"**

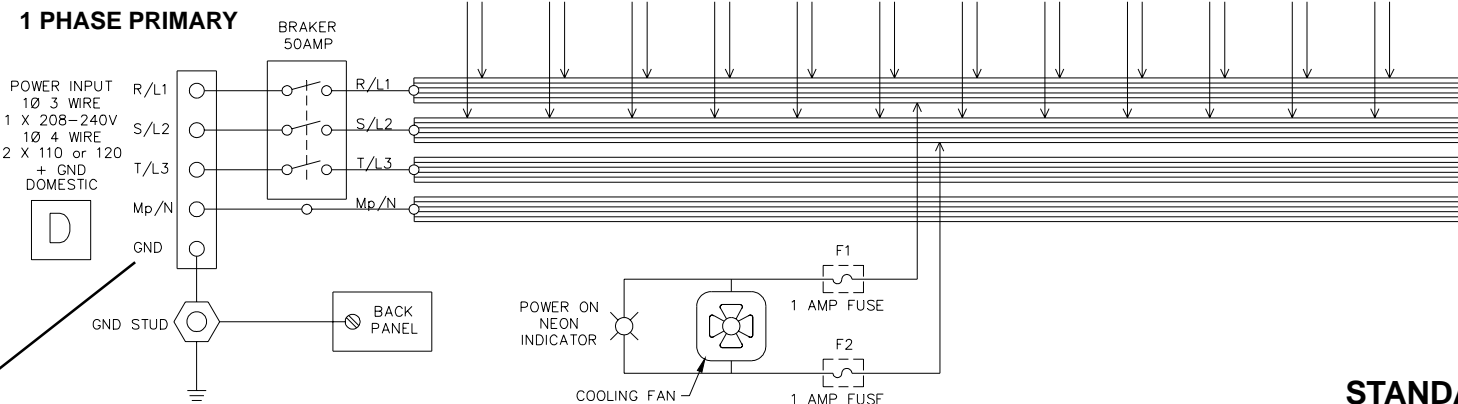
**EUROPEAN STANDARD
3 PHASE WYE PRIMARY**



1 PHASE OPEN DELTA PRIMARY



**NORTH AMERICA ALTERNATE
1 PHASE PRIMARY**

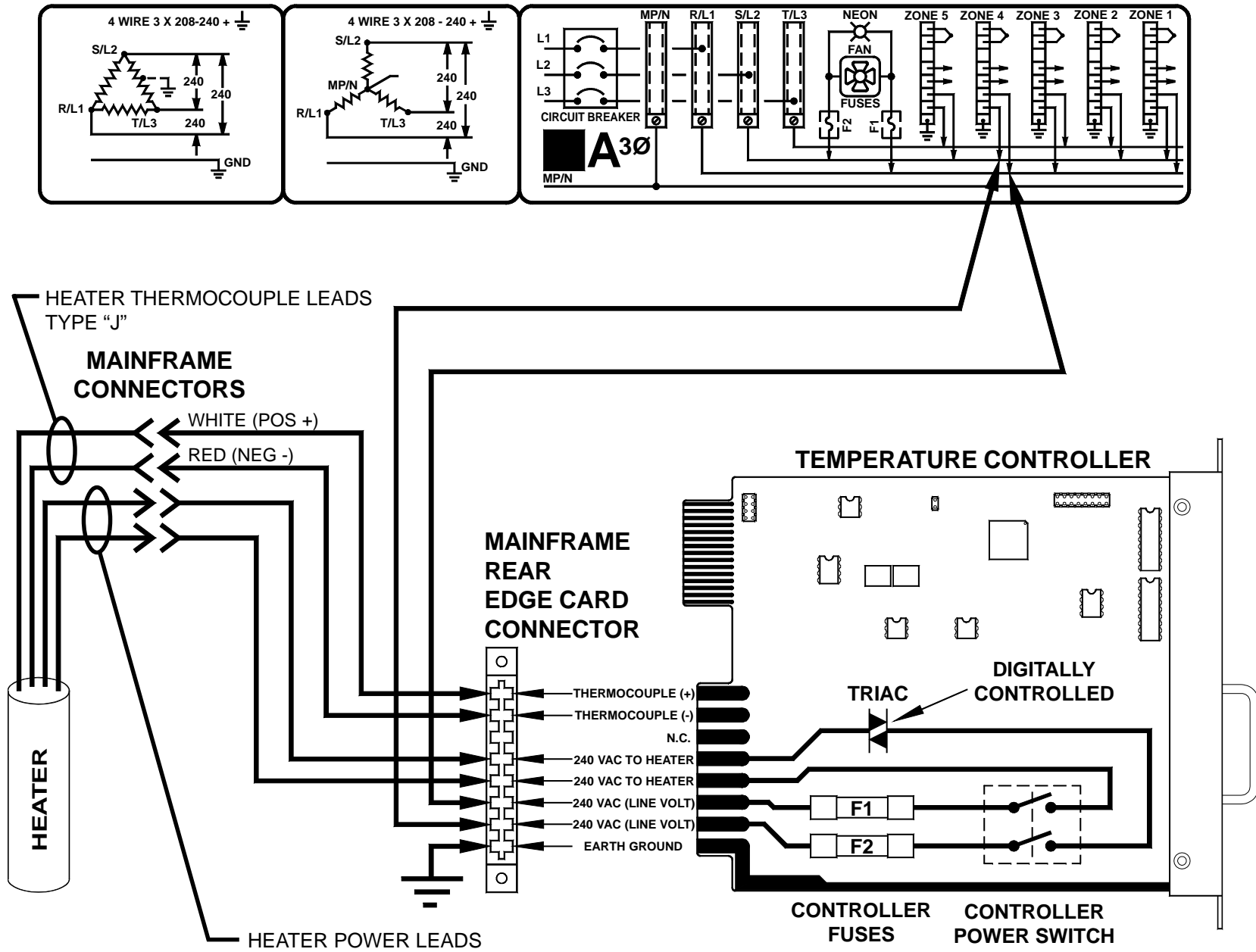


**NOTE: CUSTOMER MUST INSURE OF PROPER
CONNECTION TO EARTH GROUND!
** ALL WIRING CONFIGURATIONS ****

**** ALTERNATE CONFIGURATIONS - STYLES "B", "C" & "D" ****



**STANDARD MAINFRAME
INTERNAL WIRING DIAGRAM**

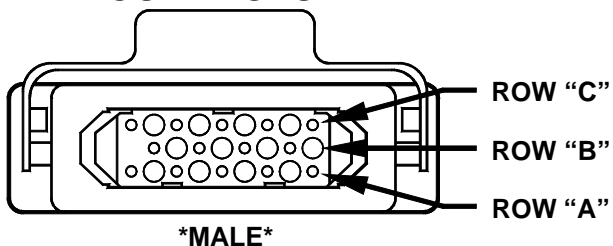




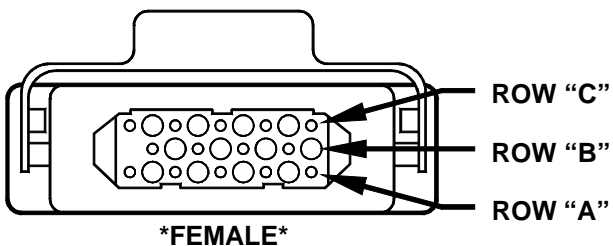
STANDARD MAINFRAME CONNECTOR WIRING DIAGRAM

SIDE OF MAINFRAME

THERMOCOUPLE INPUT CONNECTOR



POWER OUTPUT CONNECTOR



THERMOCOUPLE INPUT	
ZONE 1	ROW "A" TERMINALS 1 (WHT) + 2 (RED)
ZONE 2	ROW "A" TERMINALS 3 (WHT) + 4 (RED)
ZONE 3	ROW "A" TERMINALS 5 (WHT) + 6 (RED)
ZONE 4	ROW "A" TERMINALS 7 (WHT) + 8 (RED)
ZONE 5	ROW "B" TERMINALS 2 (WHT) + 3 (RED)
ZONE 6	ROW "B" TERMINALS 4 (WHT) + 5 (RED)
ZONE 7	ROW "B" TERMINALS 6 (WHT) + 7 (RED)
ZONE 8	ROW "C" TERMINALS 1 (WHT) + 2 (RED)
ZONE 9	ROW "C" TERMINALS 3 (WHT) + 4 (RED)
ZONE 10	ROW "C" TERMINALS 5 (WHT) + 6 (RED)
ZONE 11	ROW "C" TERMINALS 7 (WHT) + 8 (RED)
ZONE 12	ROW "A" TERMINAL 9 (WHT) + ROW "C" TERMINAL 9 (RED)
ROW "B" TERMINAL 8 IS NOT USED	

POWER OUTPUT	
ZONE 1	ROW "A" TERMINAL 1 + 2
ZONE 2	ROW "A" TERMINAL 3 + 4
ZONE 3	ROW "A" TERMINAL 5 + 6
ZONE 4	ROW "A" TERMINAL 7 + 8
ZONE 5	ROW "B" TERMINAL 2 + 3
ZONE 6	ROW "B" TERMINAL 4 + 5
ZONE 7	ROW "B" TERMINAL 6 + 7
ZONE 8	ROW "C" TERMINAL 1 + 2
ZONE 9	ROW "C" TERMINAL 3 + 4
ZONE 10	ROW "C" TERMINAL 5 + 6
ZONE 11	ROW "C" TERMINAL 7 + 8
ZONE 12	ROW "A" + "C" TERMINAL 9
ROW "B" TERMINAL 8 IS NOT USED	

